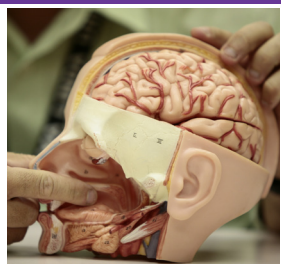


# Communication Sciences and Disorders

## School of Allied Health Professions



### PROGRAMS OFFERED

♦ B.S. ♦ M.S.

*Speech-language pathologists* assess and provide clinical services to people of all ages who cannot communicate clearly. These individuals may have problems with articulation, stuttering, voice, understanding and producing language, attention, memory, cognitive communication, and/or problem solving. Speech-language pathologists help clients develop, or recover functional communication skills so they can fulfill their educational, vocational and social roles. They counsel individuals and their families concerning communication disorders and help them learn to cope with the stress and misunderstanding that often accompany them. Additionally, they may work with people who have oral motor problems causing eating and swallowing difficulties.

### JOB OPPORTUNITIES

Employment of speech-language pathologists and audiologists is expected to increase through the year 2020. The need for services will increase as a result of advances in medical technology, the aging baby boom population, and the growth of the elderly population. Greater awareness of the importance of early identification and diagnosis of speech, language and hearing disorders will also increase employment.

### EARNINGS

The American Speech-Language-Hearing Association (ASHA) conducts salary surveys in public schools and healthcare facilities. In 2020, the national median annual salary for full-time certified speech-language pathologists working in the schools was \$75,000 (9-10 months). According to the US Department of Labor's Bureau of Labor Statistics, as of May 2020, the National Median averaging salary for speech-language pathologists was \$80,480, with the top 10 percent earning more than \$122,790. Salaries in the West Coast/Pacific tend to be higher than the national median averaging \$88,300.

### EMPLOYMENT

Speech-language pathologists and audiologists work in a variety of settings. These settings include:

- Provide evaluation and treatment to children in public schools.

- Teach in college and university programs.
- Manage agencies, clinics, organizations or private practices.
- Evaluate and treat individuals in hospital settings.
- Engage in research to enhance knowledge about human communication processes.
- Supervise and direct public school or clinical programs.
- Develop new methods and products to evaluate and treat speech-language disorders.

Speech-language pathologists often work as part of a team, which may include teachers, physicians, audiologists, psychologists, social workers, rehabilitation counselors and others. Corporate speech-language pathologists also work with employees to improve communication with their customers.

### EDUCATION AND TRAINING

A master's degree in communication sciences and disorders is entry level training for licensed and certified speech-language pathologists. However, a bachelor's degree (or equivalent) in speech pathology or communication disorders is required in order to be eligible to apply to the Master of Science degree program. Although the BS in Communication Sciences and Disorders is not a professional degree, graduates are eligible for the Speech-Language Pathology Assistant (SLPA) license upon completing the BS degree (and completing a specific number of clinical practicum hours). Students transfer to the BS program in their junior year of college, having fulfilled all general education requirements during their freshman and sophomore years at other accredited colleges or universities. The junior year begins in the autumn quarter of each academic year. Core (major) communication sciences courses and beginning clinical experiences are the emphasis of the junior year and senior years.

Eligibility for admission to the BS program requires a minimum cumulative grade point average (GPA) of 3.0 and completion of a minimum of 64 semester credits/96 quarter credits of specific general education coursework on the next page.

## Communication Sciences and Disorders (BS, MS & Transitional MS)

**Loma Linda University requirements:** to be eligible for admission to the B.S. program, the applicant must complete the following requirements.

### **Domain 1: SPIRITUAL LIFE AND WHOLENESS** (min. 8 qtr units)

**RELIGION:** Must complete an average of 4 quarter units of religion for each year of residence at Loma Linda University. All required religion must be taken at Loma Linda University.

### **Domain 2: ARTS AND HUMANITIES** (min. 16 qtr or 11 sem units)

#### **HUMANITIES:**

*Select courses from at least 3 of the following content areas:*

Civilization/history, art, literature, modern language, philosophy, religion, or general humanities elective. If a student takes Religion courses from other institutions, it will be counted in this domain.

### **Domain 3: SCIENTIFIC INQUIRY & QUANTITATIVE REASONING** (min. 12 qtr or 8 sem. units)

**NATURAL SCIENCES:** At least one natural science course must include a lab component.

- One biological science required (Human Anatomy and/or Physiology, General Biology, Microbiology, and Life Science are examples of biological sciences)
- One physical science (Physics or Chemistry required)
- Mathematics requirement: one General or Intro to Statistics course

### **Domain 4: SOCIAL SCIENCES** (min. 12 qtr or 8 sem. units)

*Select courses from two of the following content areas:*

Anthropology, economics, geography, political sciences, psychology, and sociology. Includes one course (or components integrated into several courses) in human (cultural) diversity.

### **Domain 5: WRITTEN & ORAL COMMUNICATION** (9-13 qtr or 6-9 sem. units)

**ENGLISH:** Course work must include a complete sequence in English composition that meets the baccalaureate degree requirements of a four-year college or university.

**ADDITIONAL COURSE:** May include information systems, critical thinking, and public speaking.

### **Domain 6: HEALTH AND WELLNESS** (2-6 qtr units)

**HEALTH OR NUTRITION:** May include personal health, personal nutrition, population health, global health, community nutrition, etc. One course required

**PHYSICAL ACTIVITY:** must include at least two separate physical activity courses totaling a minimum of 1 quarter unit or have military discharge papers (DD214).

### **Domain 7: ELECTIVES** to meet a minimum total of 96 quarter or 64 semester units.

**PLEASE NOTE: "C minus" grades are not transferable for credit**

#### **How to apply for the BS program**

Typically, students apply during the winter term of their sophomore year. Applications are accepted October 1 - June 1. Applications and all supporting information (transcripts, recommendations, etc) must be submitted by June 1. Apply online at [www.llu.edu/central/apply/index.page](http://www.llu.edu/central/apply/index.page).

#### **Contact Information**

Diana Richie (909) 651-5878  
drichtie@llu.edu  
website: <http://llu.edu/allied-health/sahp/speech/index.page?>

Follow CMSD!

Instagram: @llusahp

Facebook: @Loma Linda University School of Allied Health Professions

Upon completion of the Bachelor of Science degree, students are prepared to seek admission to a graduate program in Communication Sciences and Disorders or related disciplines. Most students continue their education in a Master's program in Speech-Language Pathology or Communication Sciences and Disorders. Other students complete graduate studies in audiology or in a related field of study. The master's degree is required for entry into the profession.

#### **COMMUNICATION SCIENCES AND DISORDERS (Master's)**

Entry-level for the profession is the master's degree. Graduates meet the requirements for national and state certification. Students who have completed a bachelor's degree in Speech-Language Pathology or Communication Disorders may apply to this program. The program is 7 quarters in length, including the summer between the first and second year. Students enter in the fall and go through the program as a cohort. Admission requirements include: minimum 3.0 GPA; for the last 96 quarter credits or 64 semester credits (your last 2 undergraduate years), minimum GPA of 3.3; literate professional statement; three letters of recommendation We prefer that at least 2 of the 3 recommendations be from academic sources. Recommendations are part of the electronic/online process; on-site interview and writing assessment (if selected). NOTE: students admitted to the graduate program must show evidence of having completed a minimum of one undergraduate course in each of the following areas: biological sciences (such as biology, human anatomy, etc.), physical sciences (physics or chemistry preferred), statistics, and the social/behavioral sciences (such as psychology, sociology, educational psychology, etc.)

#### **How to apply to the MS Program**

Applications open October 1. Application, transcripts and recommendation letters must be received by January 1.

#### **COMMUNICATION SCIENCES AND DISORDERS (Transitional Master's)**

Graduates meet the requirements for national and state certification. Students who have completed a bachelor's degree in a field other than Speech-Language Pathology or Communication Disorders may apply to this program. The program is 11 quarters in length, including the summers. Students enter in the fall and go through the program as a cohort. The first year of study consists of foundational coursework, and students must maintain a minimum GPA of 3.3 in order to continue in the program. Admission requirements include: minimum 3.0 GPA, for the last 96 quarter credits or 64 semester credits (your last 2 undergraduate years), minimum GPA of 3.3; literate professional statement; three letters of recommendation We prefer that at least 2 of the 3 recommendations be from academic sources. Recommendations are part of the electronic/online process; literate professional statement; three letters of recommendation, on-site interview and writing assessment (if selected). NOTE: students admitted to the Transitional Master's program must show evidence of having completed a minimum of one undergraduate course in each of the following areas prior to fall quarter of their second year in the program: biological sciences (such as biology, human anatomy, etc.), physical sciences (physics or chemistry preferred), statistics, and the social behavioral sciences (such as psychology, sociology, educational psychology, etc.)

#### **How to apply to the Transitional Master's program**

Apply online at [www.llu.edu/central/apply/index.page](http://www.llu.edu/central/apply/index.page). Applications open October 1. All information must be submitted by March 1 for Autumn Quarter.

#### **Financial Aid**

For information, contact the Office of Financial Aid at [finaid@llu.edu](mailto:finaid@llu.edu) or (909) 558-4509.

#### **International Students**

TOEFL or IELTS (or equivalent English language proficiency examination) scores for applicants whose native language is not English or whose secondary education was received outside the United States (refer to: <http://www.llu.edu/allied-health/sahp/internationalstudent.page>)

Updated 07/28/2022



## LLU at a Glance

>> Founded in 1905 >> A Seventh-day Adventist institution integrating health, science, and Christian faith >> Offers over 200 programs in the health sciences >> Houses eight schools: Allied Health Professions, Behavioral Health, Dentistry, Medicine, Nursing, Pharmacy, Public Health, and Religion >> About 4,000 students >> Over 1,300 faculty >> 2,000 professional researchers >> \$46 million dollars in private and public grants generated each year >> Many service-learning opportunities

Loma Linda University  
Loma Linda, California 92350  
909.558.4998  
Website: [www.llu.edu](http://www.llu.edu)  
[www.facebook.com/llualliedhealth](https://www.facebook.com/llualliedhealth)